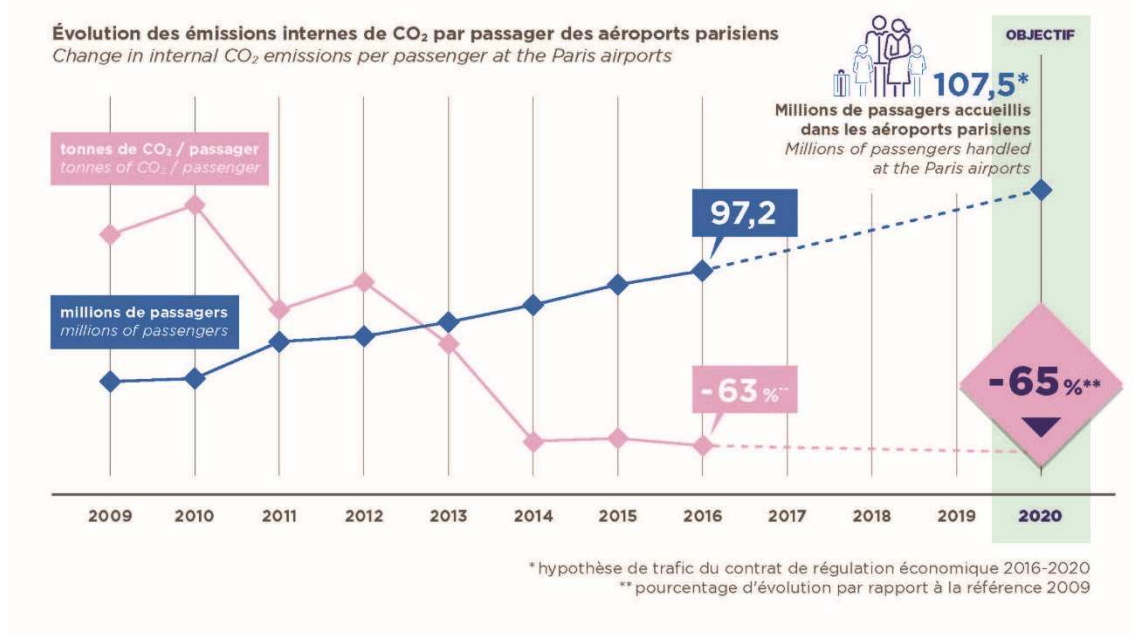


21 June 2017

Groupe ADP raises its target for the reduction in CO₂ emissions: -65% at the 3 Paris airports between 2009 and 2020

Groupe ADP has made reducing its carbon footprint one of the pillars of its environmental policy. At the end of 2016, Groupe ADP had brought down its CO₂ emissions per passenger by 63%, compared with 2009, thus exceeding its initial target. As a result, in December 2016, the Group set itself a new challenge by raising its target for the reduction in CO₂ emissions to 65% at the end of 2020.

"The reduction in Groupe ADP's CO₂ emissions has occurred whilst maintaining a consistent level in quality of service, and taking into account the growth in airport capacities. To achieve this, Groupe ADP reduced its consumption and cut the percentage of carbon-based energy within its energy mix by tackling the 3 main sources of emissions at its airports: thermal plants, electricity consumption and service vehicles," says Augustin de Romanet, Chairman & Chief Executive Officer of Groupe ADP.



Geothermal energy at Paris-Orly : 70% of heating in the terminals

Geothermal energy at Paris-Orly Airport is one of the drivers of this reduction in emissions and serves as an example of how using renewable energies is being developed at the Paris airports.

Thanks to a plant that came into use in 2011, geothermal energy allows buildings at Paris-Orly to be heated, and accounts for 70% of the heating in the terminals and new buildings, including the Askia office building in the Cœur d'Orly district. Since it was set up, the use of geothermal energy has avoided the production of 50,000 metric tonnes of CO₂.

Furthermore, it allows Paris-Orly Airport to reduce its annual consumption of gas by 4,000 tonnes of oil equivalent, which is equivalent to the annual heating of 3,200 homes. The airport is thus able to avoid the discharging of close to 9,000 tonnes of CO₂ per year.

58% : the total weight of renewable energies at Paris-Orly in the production of heat

In winter, Groupe ADP supplements the production of heat from geothermal energy by recovering the heat from the Rungis waste incineration plant and by the airport's gas-fired thermal plant. The geothermal plant produces 31% of the heat at Paris-Orly, the Rungis waste incineration plant provides 27%, and the natural-gas-fired plant 42%. The total weight of renewable energies and heat recovery at Paris-Orly therefore reaches 58% of the production of heat.

The biomass boiler at Paris-Charles de Gaulle

With a boiler commissioned in 2012, the use of biomass is the other important driver in reducing CO₂ emissions at the Paris airports and covers 25% of the heat consumed at the airport.

The two wood-fired boilers can produce—when fully up and running—78,000 MWh of heat annually and avoid the emission of 18,000 metric tonnes of CO₂ per year.

Implementation of an internal carbon price

Long committed to the fight against climate change, Groupe ADP is concomitantly equipping itself with a key tool to bolster its actions in this direction: the implementation—at the start of 2017—of an internal carbon price. This tool contributes to establishing the part Groupe ADP is playing in the quest for carbon neutrality, an aim that the Group has already stated for 2030, within the framework of the *Airport Carbon Accreditation* programme introduced by Airport Council International-Europe.

In conjunction with this commitment, in March 2017 Augustin de Romanet signed the "*Decarbonize Europe Manifesto*", introduced by the think-tank *The Shift Project*, and added his support to the Carbon Pricing Leadership Coalition, whose goal is to encourage the emergence of a real price of carbon on a global scale.

Press contact: Elise Hermant, Medias and Reputation Department Manager +33 1 74 25 23 23

Investor Relations: Aurélie Cohen, Head of Investor Relations +33 1 74 25 70 64 - invest@adp.fr

Groupe ADP builds, develops and manages airports, including Paris-Charles de Gaulle, Paris-Orly and Paris-Le Bourget. In 2016, the group handled, through Paris Aéroport more than 97 million passengers and 2.2 million metric tonnes of freight and mail at Paris-Charles de Gaulle and Paris-Orly, and more than 42 million passengers in airports abroad through its subsidiary Aéroports de Paris Management. Boasting an exceptional geographic location and a major catchment area, the Group is pursuing its strategy of adapting and modernising its terminal facilities and upgrading quality of services; the group also intends to develop its retail and real estate businesses. In 2016, Group revenue stood at €2,947 million and net income at €435 million.

Registered office: 1, rue de France, 93290 Tremblay-en-France. Aéroports de Paris is a public limited company (Société Anonyme) with share capital of €296,881,806. Registered in the Bobigny Trade and Company Register under no. 552 016 628.

groupeadp.fr

