

PARIS-LE BOURGET  
AIRPORT GUIDE



**AÉROPORTS DE PARIS**



## **Dear reader,**

If you're reading this document, it's because you are a user of the Paris-Le Bourget airport.

Prepared by the Customer Relations and Communications team, the purpose of this document is to bring together all of the information necessary for a clear understanding of this airport and for working and operating successfully here, an airport that is historic yet future-oriented, efficient yet unrecognised, urban yet strongly committed to sustainable development.

This guide is designed to be easy-to-read, user friendly and informative as well as a point of reference between everyone who passes through the airport, year after year and hour after hour every week. An airport is a place open to the world, but it is also a city within itself with its rhythms and travel behaviour, projects and lifestyles: most of the passengers passing through our facilities are

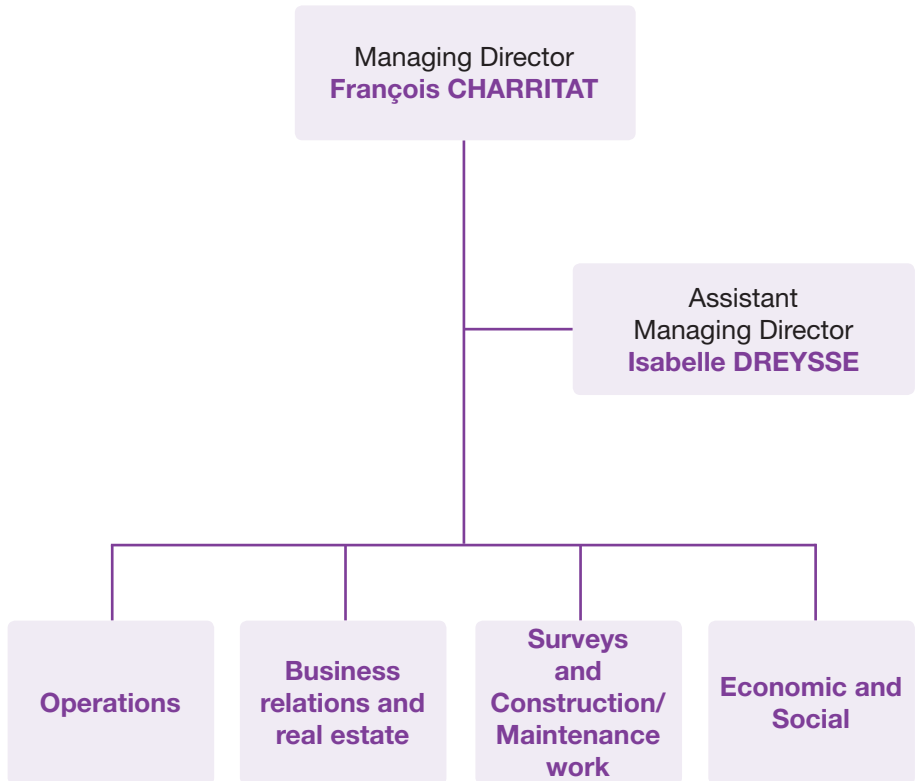
unaware of the Paul Bert building, "H zero" or the FOX transfer service, but we all know that they wouldn't be able to benefit from the exceptional quality of airport service without the men and women that develop, operate and coordinate these aspects of our local Monopoly.

So, please enjoy reading this guide, which we have designed to be as practical, user-friendly and as comprehensive as possible. It is also an evolving document and your feedback is welcomed. We are planning to disseminate it widely to 3,000 employees working at le Bourget, and to make it available to anyone interested in this guide, whether passing through the airport or for personal needs.

I hope that you find this guide an informative and enjoyable read.

**François Charritat**  
Managing Director

# Management chart



# Contents

06



## Why set up business at the airport?

08



## Getting to Paris-Le Bourget airport

09 Public transport

10 Private car

11



## Procedures

12 Business operations permits

12 Airside access badges

14 Ramp driving permits

14 Construction work on site  
or in leased premises

15 Safety Management System

16



## Services offered

17 Provision of fluids and electricity

17 Breakdown services

18 Management of spillages of hazardous or polluting products

18 Logistics

19 Snow clearance

19 Mailboxes

20 Waste disposal

20 Hub One (Telecoms)

21 Environment Partners Club

21 Paris-Le Bourget Extranet

21 Filming and still photography

22 Conference room rental

23 Car rental

23 Pilot medical certification

24 Air and Space Museum

24 Hubstart Paris Region®

25 French International Air and Space Show

25 Multi-company staff restaurant

25 Ironing service

26 Hotel and restaurants

27



## Relevant government services

28 Border Police Directorate

28 Air Transport Police

28 Regional Customs Directorate

28 Regional Flight Information and Assistance office - Paris-Le Bourget

29



## Administrative services

30 Town halls

30 Prefecture responsible for the Safety and Security of the Paris-Charles de Gaulle and Paris-Le Bourget airports

30 Urban community of the Paris-Le Bourget Airport

31 La Poste

31 The Gonesse hospital centre

31 Prefectures

31 Sub-prefectures

32 Territorial councils

33



## Appendices

34 Glossary

35 Service Providers (FBO)

35 Your contacts



## Why set up business at the airport?





As Europe's leading business aviation airport and only 7 km from Paris, Paris-Le Bourget is home to some of the biggest names in the aviation industry: three out of the five business aircraft manufacturers have established their main European maintenance base here, four out of the five international leading FBO companies (ground handling service providers) have set up here, as well as the majority of catering, on-board equipment, aircraft painting and training companies.

The hotel and catering resources are extensive, both qualitatively and quantitatively. Three car or limousine rental companies are also established here and these services also benefit from the proximity of the third largest exhibition park in the Paris region.

As operator of this airport, Aéroports de Paris, is committed to maintaining a high level of service in terms of safety, efficiency, responsiveness and confidentiality.

Aéroports de Paris offers various types of products for rental: aircraft hangars, aircraft parking areas, industrial buildings, office space, light-duty vehicle car parks, or undeveloped land; land reserves, in both airside and landside areas, covering around thirty hectares.

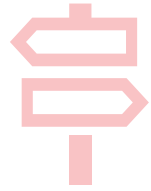
Aéroports de Paris also offers on-demand industrial services, including electricity, heating, waste management and breakdown services.

#### **Support service**

 01 48 62 16 56

 [contact-lbg@adp.fr](mailto:contact-lbg@adp.fr)

 [www.aeroportsdeparis.fr/adp/fr-fr/professionnels/aviation-d-affaires/aviation-d-affaires/](http://www.aeroportsdeparis.fr/adp/fr-fr/professionnels/aviation-d-affaires/aviation-d-affaires/)



## Getting to Paris-Le Bourget airport





---

## → By public transport

### From Paris:

#### **RER B + 152 bus**

RER B from Paris to "Le Bourget", then RATP 152 Bus (stop located at avenue Division Leclerc) to Paris-Le Bourget airport, (Musée de l'Air et de l'Espace stop).

#### **Metro 7 + 152 bus**

Metro line 7 from Paris to "Aubervilliers" then RATP 152 Bus (stop located at avenue Division Leclerc) to Paris-Le Bourget airport, (Musée de l'Air et de l'Espace stop).

#### **Metro 5 + 148 Bus**

Metro line 5 from Paris to "Bobigny-Pablo Picasso" Then RATP 148 Bus to Paris-Le Bourget airport (Blanc-Mesnil-Musée de l'Air et de l'Espace stop)

#### **350 Bus**

RATP 350 Bus from Paris Gare de l'Est to Paris-Le Bourget airport, (Musée de l'Air et de l'Espace stop).

### From other departure points:

#### **RER B + 148 Bus**

RER B from Paris to "Drancy" Then RATP 148 Bus to Paris-Le Bourget airport (Musée de l'Air et de l'Espace stop)

#### **350 Bus**

RATP 350 Bus from Paris-Charles de Gaulle airport to Paris-Le Bourget airport, (Musée de l'Air et de l'Espace stop)





---

## → By private car

### **Directions from Paris:**

A1 motorway towards Lille and Paris-Charles de Gaulle airport, exit n° 5 "Le Bourget", Musée de l'Air et de l'Espace Journey time: 15 minutes (outside rush hours) from Paris (Porte de la Chapelle)

### **Directions from the North**

RD317 - RN2 towards Paris Northern Access (Pont Yblon roundabout) or Musée de l'Air et de l'Espace

## → By taxi

Taxi phone point: 01 48 62 52 33

Journey time: 15 minutes (outside rush hours)

from Paris-Le Bourget airport to Paris-Porte de la Chapelle

Journey time: 15 minutes (outside rush hours)

from Paris-Charles de Gaulle airport to Paris-Le Bourget airport



## Procedures





## → Business operations permits

Companies wishing to set up business at Paris-Le Bourget airport are required to obtain a business operations permit. The latter is a regulatory requirement for any business operating on the airport site. Aéroports de Paris is responsible for issuing and monitoring these permits.

We strongly advise that you contact the Paris-Le Bourget airport's Local Security Office (BLS)

three months prior to business start-up on site in order to obtain information suited to your needs.

### **For more information:**

[www.aeroportsdeparis.fr](http://www.aeroportsdeparis.fr) >  
*professional activities* > *business services* > *business operations permit*

## → Airside access badges

The Airside Area, located beyond the security check points, is accessible only to holders of Airport Access Badges (Titres de Circulation Aéroportuaires or TCA).

The issuance of access badges is subject to the applicant company holding a business operations permit.

### **Documents to be provided:**

- The business operations permit application form issued by the BLS
- The identity of the appointed security representative
- An original K-bis (business registration certificate) issued within the last 3 months
- A written statement from the customer and/or sub-contractor justifying airport site operations or a copy of the lease or the temporary occupation permit (AOT) for airport-based clients. Subcontractors should complete a similar application.

### **Contact**

Local Security Office (BLS)  
90 avenue de l'Europe

 **01 48 62 38 77/93**

*From Monday to Friday between 9 a.m. and midday and from 1.30 p.m. to 4 p.m. by appointment only*





The company must appoint its own security representative(s), who is (are) then required to complete suitable training. The security representative is responsible for identifying needs in terms of access badges: types of access badges, accessible areas etc.

#### Documents to be provided:

- Colour photograph Invoice concerning the payment for the access badge application
- A photocopy of both sides of the current identity papers indicated in the form, authorised by the security representative (signature and company stamp)
- A photocopy of the security awareness certificate issued by the employer
- A photocopy of the front side of the last access badge issued
- A photocopy of the company's business operations permit
- Statement issued by the police services or the gendarmerie in the event of the loss or theft of the access badge.
- Detailed supporting documentation for the application of a Le Bourget airport access badge providing access to the two areas

In order to validate the compliance of access badges, holders are required to attend a security awareness session conducted by the Training department of the company Alyzia (01 74 37 11 08).

#### Payment and issue lead times

The Airport access badge is prepared by the BLS.

The airside access badge fee is payable to Aéroports de Paris for each airside access permit badge application.

Please allow up to one month for badge delivery.

#### Contact

Local Security Office (BLS)  
90 avenue de l'Europe

☎ **01 48 62 38 77/93**

*From Monday to Friday between 9 a.m. and midday and from 1.30 p.m. to 4 p.m. by appointment only*

#### Airport Access Badges

Airport Access badges are issued Monday to Friday at the Police de l'Air aux Frontières (PAF - border police) department in Bourget between 11 a.m. and midday at: 660 esplanade de l'Air et de l'Espace.



## → Ramp driving permits

Staff required to drive in airside areas must hold a ramp driving permit (permis T) and their vehicles must also display a vehicle access permit.

As with the airside security badges, the issuance of vehicle access permits is subject to the provision of a business operations permit. The issuance of the permis T requires theoretical training to be provided by a trainer approved by the Airport Directorate.

On completion of these formalities, ramp driving permits are available within 15 days from the Local Security Office (BLS).

Road access to airside areas for personnel, transported goods and vehicles is via the Road Security Checkpoint (Poste d'Accès Routier avec Inspection Filtrage or PARIF).

This checkpoint is open 24/7 to personnel holding ramp driving permits and vehicles displaying access permits.

### **Training**

Training is provided on Wednesdays at 8.45 a.m. at the Aéroports de Paris building at 180, Esplanade de l'Air et de l'Espace.

### **Documents to be provided:**

- An identity card
- An airside access badge
- A driving licence in any category

### **Support service**

 01 48 62 16 56

 [contact-lbg@adp.fr](mailto:contact-lbg@adp.fr)

## → Construction work on site or in leased premises



All Aéroports de Paris customers are obliged to inform the company of their intention to carry out any modification, demolition or construction work on leased land or premises prior to applying to the relevant authority for planning permission.



Applicants can receive details of the procedure for third-party file processing as well as a statement of requirements on request. Upon receipt of the works file from the customer, Aéroports de Paris agrees to provide its opinion within 5 weeks when the file is found to be complete.

Aéroports de Paris may assist its customers in dealing with the authorities concerned.

#### **Support service**

☎ 01 48 62 16 56

✉ [contact-lbg@adp.fr](mailto:contact-lbg@adp.fr)

## → Safety Management System (SMS)

Companies wishing to set up business at the airport and pursue airside activities shall be subject to the SMS rules. This initiative forms part of the airport certification process, within the scope of airport safety. It is a regulatory requirement, governed by international law and forms part of the global management system framework (quality, IMS, etc.) for the purpose of analysing events that have an impact on aviation activity.

It also allows for the identification and management of risks by anticipating changes. In order to ensure the necessary coordination of these activities, companies are required to appoint a representative.

He/she will be required to get in contact with the Airport Safety Officer of Paris-Le Bourget airport, prior to the commencement of airside activities, in order to obtain

the required information and to agree on the modes of interaction between the stakeholders.

An Airport Safety section is available on the Paris-Le Bourget extranet site:

🌐 <https://espacepro.aerportsdeparis.fr>

#### **Support service**

☎ 01 48 62 16 56

✉ [contact-lbg@adp.fr](mailto:contact-lbg@adp.fr)



## Services offered





## → Provision of fluids and electricity

Paris-Le Bourget Airport has its own heating/cooling plant and electricity distribution plant, which enables Aéroports de Paris to offer its customers a broad range of industrial services, ranging from the supply of energy to the maintenance of facilities. Under the terms of a facilities maintenance contract entered into with customers, Aéroports de Paris agrees to ensure the operation and maintenance thereof.

The cost for the provision of fluids (electricity, gas and cold water) comprises a fixed charge based on the power rating of the facility, and a variable charge based on actual consumption.



## → Breakdown services

Aéroports de Paris can provide breakdown services (for electrical, heating and plumbing systems) on private facilities covered by a service contract.

Some breakdown services operate 24/7.

### Support service

☎ 01 48 62 16 56

✉ [contact-lbg@adp.fr](mailto:contact-lbg@adp.fr)

### Duty Manager (Directeur de Permanence or DDP)

☎ 06 03 42 63 53 (JHNO)





## → Management of spillages of hazardous and polluting products

In the event of an accidental airside spillage of hazardous or polluting products (kerosene, chemicals, etc.), either onto the ground or into the drainage systems, the customer must notify the Airport Fire Fighting and Rescue Service (Service Sécurité Incendie de l'Aéroport or SSLIA) as quickly as possible so that this service can respond with adequate resources to remove any risk of fire.

### **SSLIA**

☎ **01 48 62 53 18**

The customer must also notify the Airport Operations centre (Pôle des

Opérations Aéroportuaires or POA), which will then wash/degrease the area and collect, clean and remove the waste concerned using appropriate containers.

### **POA**

☎ **01 48 62 40 10**

There is no charge for the SSLIA service. The washing, degreasing, cleaning and waste removal services are chargeable and will be invoiced to the applicant.

## → Logistics

24/7 Landside/Airside transfer of furniture supplies and industrial equipment:

- Inspections and quotations are provided free-of-charge
- Waste and recycling services available
- Furniture storage

### **Contact**

☎ **01 48 62 24 33 (CDG)**

Provision of various lifting equipment and landside/airside administrative and industrial equipment transport.



## → Snow clearance

Requests for snow clearance (spreading of snow and ice-melting materials, snow ploughing, etc.) should be made in writing to the following e-mail address:

✉ [lbg.neige.verglas@adp.fr](mailto:lbg.neige.verglas@adp.fr)

Requests are processed in real time, subject to Aéroports de Paris team availability.

Aéroports de Paris reserves the right to turn down requests it considers incompatible with the use of the premises and resources.

Its decisions in terms of priority are final.

## → Mailboxes

The La Poste mailboxes are located opposite the Local Security Office (BLS):  
90 avenue de l'Europe

Every customer at the airport is entitled to an individual mailbox.

Snow clearance operations are performed under the control and responsibility of the area operator.

### Support service

☎ 01 48 62 16 56

✉ [contact-lbg@adp.fr](mailto:contact-lbg@adp.fr)

### Responsible déneigement

☎ 06 78 52 33 52

### Support service

☎ 01 48 62 16 56

✉ [contact-lbg@adp.fr](mailto:contact-lbg@adp.fr)



## → Waste disposal

This service comprises the provision of waste skips or bins for the collection of waste and for the collection and transport of waste.

### **Disposal of recyclable waste**

Three types of 1,000-litre bins are available:

- Green bin: cardboard/paper
- Red bin: food waste
- Blue bin: single-component waste

### **Disposal of oversized items**

This service includes the provision of a skip for oversized items of waste, its removal and transport.

The fixed price for the removal package is calculated on the basis of the nature and weight of the oversized items to be removed.

### **Support service**

☎ 01 48 62 16 56

✉ [contact-lbg@adp.fr](mailto:contact-lbg@adp.fr)

## → Telecommunications and internet services

Hub One, an Aéroports de Paris subsidiary, offers the following services:

- Traditional telephony
- IP Telephony
- WiFi network
- WiMax network
- Corporate networks
- Mobile networks
- The Airport application
- Internet access

### **Contact**

🌐 [hubone.fr](http://hubone.fr)

☎ 01 74 37 24 24



## → Environment Partners Club

The aim of this club is to establish a culture of sustainable development shared by all the companies operating at Paris-Le Bourget airport.

### Support service

01 48 62 16 56 [contact-lbg@adp.fr](mailto:contact-lbg@adp.fr)

## → Paris-Le Bourget Extranet

Aéroports de Paris has created an Internet-accessible interface for its customers and partners so that they are allowed access to practical operational information:

- Maps of the airport
- Procedures relating to access badges
- Official decrees and orders governing the on-site movement of personnel

To access the Paris-Le Bourget Extranet:

<https://espacepro.aeroportsdeparis.fr>

or log onto the website

[aeroportsdeparis.fr](https://aeroportsdeparis.fr),

and go to

*Activités professionnelles >  
Extranet opérationnel*

## → Filming and still photography

Do you work in the film and audiovisual industry? From feature films, short films, music videos, commercials, entertainment programmes, corporate films and photojournalism, our airport and general aviation aerodromes host many different types of commercial shoots every year.

### Support service

☎ 01 48 62 16 56

✉ [contact-lbg@adp.fr](mailto:contact-lbg@adp.fr)

For any press communication queries, please contact

☎ 01 43 35 70 70



## → Conference room rental

Aéroports de Paris offers its customers and business partners a conference room and associated services (Espace Alizé):

- Multimedia services (overhead projects, video conferencing)
- Secure enclosed car park
- Air-conditioned room, with seating for 30 people/conference set-up for 70 people
- Various configurations available: work meetings, press room, cocktail parties.

### Support service

☎ 01 48 62 16 56

✉ [contact-lbg@adp.fr](mailto:contact-lbg@adp.fr)





## → Car rental

### **Air Limousine Prestige**

560 Esplanade du Musée de l'Air  
et de l'Espace  
Zone Centrale  
Aéroport Paris-Le Bourget  
93352 LE BOURGET CEDEX

☎ 01 74 37 77 77

📠 01 74 37 77 78

### **Europcar**

1200 avenue de l'Europe  
Zone d'Aviation d'Affaires  
Aéroport Paris-Le Bourget  
93350 LE BOURGET

☎ 01 70 03 19 50

📠 01 70 03 19 97

### **Keybrid**

145 rue de Madrid  
Zone d'Aviation d'Affaires  
Aéroport Paris-Le Bourget  
93350 LE BOURGET

☎ 01 74 25 77 77



## → Pilot medical certification

Doctor Joëlle HERAIL

- Consultancy in aviation medicine
- FAA Licence
- Transport Canada
- French private pilot's licence

180 Esplanade de l'Air et de l'Espace  
Bâtiment Aéroports de Paris  
Aéroport Paris-Le Bourget  
93350 LE BOURGET

### **Contact :**

☎ 06 11 04 82 41

**Musée de l'Air et de l'Espace  
(Air and Space Museum)**



## → Musée de l’Air et de l’Espace (Air and Space Museum)

Musée de l’Air et de l’Espace  
(Air and Space Museum)  
Aéroport de Paris - Le Bourget  
BP 173  
93352 Le Bourget Cedex France

### Contact :

☎ 01 49 92 70 00

✉ [www.museeairespace.fr](http://www.museeairespace.fr)



## → Hubstart Paris Region®

Under this brand name, around thirty partners are involved in promoting the Grand Roissy region and its businesses at international level.

The Hubstart initiative offers an attractive service package aimed at stimulating international investment.

Aéroports de Paris is one of the founding members of this collective promotional initiative.

### Contact :

**Vincent GOLLAIN**

☎ 01 58 18 69 09

✉ [vgollain@hubstart-paris.com](mailto:vgollain@hubstart-paris.com)



## → Salon International de l'Aéronautique et de l'Espace (French International Air and Space Show)

The show is held on Paris-Le Bourget airport premises, every two years, odd years, in the 3rd week of June. It is organised by the GIFAS subsidiary company SIAE. The organiser begins the preparatory work for each show during the preceding Autumn.

At the same time, coordination meetings are held and attended by representatives of SIAE, Aéroports de Paris

and any airport-based companies likely to be affected by the show.

### Contact :

☎ 01 53 23 33 33

🌐 [salon-du-bourget.fr](http://salon-du-bourget.fr)

## → Multi-company staff restaurant

In order to meet the catering needs of 3,000 airport staff, a restaurant intended for the staff of companies is located in the Central East area, in Building A2.

Access to the restaurant is governed by an agreement set between individual companies with Air France and Sogeres defining the prices charged and conditions of access.

412 avenue de l'Europe  
Zone entretien  
Aéroport Paris-Le Bourget  
93350 LE BOURGET

### Contact :

☎ 01 49 34 82 27

🌐 [sogeres.fr](http://sogeres.fr)

✉ [6790@sogeres.fr](mailto:6790@sogeres.fr)

## → Ironing service

A mobile ironing service is available at the airport. A red van bearing the signage «Repasserie» collects and delivers laundry twice per week.

Laundry is returned on the next round

### Contact :

☎ 01 45 91 16 38





## → Hotel and restaurants



### **La Rose des Vents Restaurant**

1811 avenue de l'Europe  
Zone d'Aviation d'Affaire  
Aéroport Paris-Le Bourget  
93350 LE BOURGET  
01 49 34 10 38



### **Kyriad Prestige Hotel**

1811 avenue de l'Europe  
Zone d'Aviation d'Affaire  
Aéroport Paris-Le Bourget  
93350 LE BOURGET  
01 49 34 10 38



### **Hélice Restaurant**

510 Esplanade de l'Air et de l'Espace  
Zone Centrale  
Aéroport Paris-Le Bourget  
93350 LE BOURGET  
01 48 35 30 49



## Relevant government services





---

## → **Border Police Directorate (Direction de la Police Aux Frontières)**

660 Esplanade de l'Air et de l'Espace  
Zone centrale  
Aéroport Paris-Le Bourget  
93350 LE BOURGET

☎ 01 48 62 50 24  
☎ 01 48 62 40 88

## → **Air Transport Police (Gendarmerie des Transports Aériens)**

1240 avenue de l'Europe  
Zone d'Aviation d'Affaire  
Aéroport Paris-Le Bourget  
93350 LE BOURGET

☎ 01 48 62 50 12  
☎ 01 48 66 01 47

## → **Regional Customs Directorate (Direction Régionale des Douanes)**

65 avenue de l'Europe  
Aéroport Paris-Le Bourget  
93350 LE BOURGET

☎ 01 48 16 50 74  
☎ 01 48 16 57 17

## → **Regional Flight Information and Assistance office (Bureau Régional d'Information et d'Assistance au vol) Paris-Le Bourget**

Pilots may collect and file flight plans at the BRIA office.

🌐 <https://www.sia.aviation-civile.gouv.fr>

☎ 01 48 62 53 14

☎ 01 48 62 65 04



## Administrative services





## → Town halls

### **Bonneuil-en-France**

15 rue Gonesse  
95500 BONNEUIL-EN-FRANCE

☎ 01 39 86 30 40

📠 01 39 93 67 08

### **Dugny**

1 rue de la Résistance  
93340 DUGNY

☎ 01 49 92 66 66

📠 01 49 92 66 71

### **Gonesse**

66 rue de Paris  
95500 GONESSE

☎ 01 34 45 11 11

📠 01 39 87 13 22

### **Le Bourget**

65 avenue de la Division Leclerc  
93530 LE BOURGET

☎ 01 48 38 82 82

📠 01 48 38 82 47

### **Le Blanc-Mesnil**

Place Gabriel-Péri  
93150 LE BLANC-MESNIL

☎ 01 45 91 70 70

📠 01 45 91 71 70

## → Prefecture responsible for the Safety and Security of the Paris-Charles de Gaulle and Paris-Le Bourget airports

☎ 01 48 62 79 74

🌐 [seine-saint-denis.pref.gouv.fr](http://seine-saint-denis.pref.gouv.fr)

✉ [pref-secretariat-spcarb@seine-saint-denis.gouv.fr](mailto:pref-secretariat-spcarb@seine-saint-denis.gouv.fr)

## → The Urban Community of Paris-Le Bourget Airport

Paris-Le Bourget  
Hôtel de Ville  
65 avenue de la Division Leclerc  
93350 LE BOURGET

☎ +33 (0)1 48 38 82 82



## → La Poste

96 avenue de la Division Leclerc  
93350 LE BOURGET

☎ 3631  
*(toll-free number)*

## → Gonesse Hospital Centre

25 rue Bernard Février  
95500 GONESSE

☎ 01 34 53 21 21  
☎ 01 34 53 21 90

## → Prefectures

Seine-Saint-Denis  
1 Esplanade Jean-Moulin  
93007 BOBIGNY

☎ 01 41 60 60 60  
☎ 01 48 30 22 88  
🌐 [seine-saint-denis.pref.gouv.fr](http://seine-saint-denis.pref.gouv.fr)

Val d'Oise  
10 avenue Bernard-Hirsch  
95010 CERGY PONTOISE

☎ 01 34 20 95 95  
☎ 01 77 63 60 11  
🌐 [val-doise.gouv.fr](http://val-doise.gouv.fr)

## → Sub-prefectures

### Argenteuil

2 rue Alfred Labrière  
95100 ARGENTEUIL

☎ 01 34 20 95 95  
☎ 01 34 23 36 32

### Pontoise

37 rue de la Coutellerie  
95300 PONTOISE

☎ 01 34 20 95 95  
☎ 01 30 38 25 89



### **Le Raincy**

57 avenue Thiers  
93340 LE RAINCY

☎ 01 43 01 47 00

📠 01 43 01 47 10

### **Saint-Denis**

28 boulevard de la Commune  
de Paris  
93300 SEINE-SAINT-DENIS

☎ 01 49 33 94 44

📠 01 42 43 28 34

### **Sarcelles**

1 boulevard François Mitterrand  
95200 SARCELLES

☎ 01 34 20 95 95

📠 01 34 04 30 19

## → Territorial councils

### **Seine-Saint-Denis General Council**

93 rue Carnot  
93007 BOBIGNY CEDEX

☎ 01 43 93 93 93

📠 01 43 93 90 50

🌐 [seine-saint-denis.fr](http://seine-saint-denis.fr)

### **Val d'Oise General Council**

2 avenue du Parc  
95032 CERGY PONTOISE CEDEX

☎ 01 34 25 30 30

📠 01 34 25 33 00

🌐 [valdoise.fr](http://valdoise.fr)

### **Greater Paris Regional Council**

35 boulevard des Invalides  
75007 PARIS

☎ 01 53 85 53 85

📠 01 53 85 53 89



# Appendices







## → Glossary

<b>RED BADGE</b>	Permanent airside badge enabling access to the entire airside area, including the restricted access security area, on the basis of allocated security sectors.
<b>GREEN BADGE</b>	Accompanied badge issued for a 24-hour period (may be reissued only once) allowing access to the entire airside area, including the restricted access security area (on the basis of those security sectors allocated to the accompanying person). This badge is issued by the GTA.
<b>LANDSIDE</b>	New name for the Public Area since 29 April 2010
<b>AIRSIDE</b>	New name for the Restricted Access Security Area since 29 April 2010.
<b>DPAF</b>	Direction de la Police Aux Frontières (Border Police)
<b>DPP</b>	Directeur de Permanence Plateforme (Duty Airport Manager)
<b>FBO</b>	Fixed-Base Operator, ground handling service providers, operating a private terminal
<b>GTA</b>	Gendarmerie des Transports Aériens (Air Transport Police)
<b>JHNO</b>	Jours et heures non ouvrables (Non-Business Days and Hours)
<b>PARIF</b>	Poste Accès Routier Inspection Filtrage en zone côté piste (Airside Road Security Checkpoint)
<b>PERMIS T</b>	Airside driving permit
<b>POA</b>	Pôle Opérations Aéroportuaires (Airport Operations Centre)
<b>SGS</b>	Système de Gestion de la Sécurité (Safety Management System)
<b>SIAE</b>	Salon International de l'Aéronautique et de l'Espace (French International Air and Space Show)
<b>SIGNAGE</b>	The buildings located on avenue de l'Europe are numbered according to the metric principle. The "Point Zéro" reference point is located at the Paul Bert crossroads, which leads into Avenue de l'Europe. The building number represents its distance in metres from the reference point.
<b>SME</b>	Système de Management Environnemental (Environmental Management System)
<b>SSLIA</b>	Service de Sauvetage et de Lutte contre les Incendies d'Aéronefs (the Aéroports de Paris Airport Fire Fighting and Rescue Service)
<b>TCA</b>	Titre de Circulation Aéroportuaire (Airport Access Badge)



## → Service providers (FBO)

COMPANY NAME	Phone	Email
ADVANCED AIR SUPPORT	01 48 35 89 64	handling@advancedairsupport.com
DASSAULT FALCON SERVICE	01 49 34 20 20	handling@dassault-falcon.com
JETEX	01 74 37 25 22	fbo-lbg@jetex.com
LANDMARK	01 49 34 62 84	lfbp@landmarkaviation.com
SIGNATURE FLIGHTSUPPORT	01 49 92 75 41	lbgt1@signatureflight.fr
UNIJET	01 48 35 99 10	ops@unijet.fr
UNIVERSAL	01 48 35 96 38	france@universalaviation.aero

## → Your contacts

Telephone helpline  
01 48 62 16 56

E-mail  
contact-lbg@adp.fr

### CONTACTS

### TELEPHONE

SSLIA emergencies	01 48 62 53 18
Airside operations (POA) - Permanently available 24/7	01 48 62 40 10
Local Security office (BLS)	01 48 62 38 77 / 01 48 62 38 93
Security representative	01 48 62 45 34
Landing fees	01 48 62 40 14
Applications for T driving licence training	01 48 62 96 09
Filming and commercial photography permits	01 48 62 40 26 / 06 72 35 29 62
Aéroports de Paris press office	01 43 35 70 70
Operations - General Resources	01 48 62 52 22
Real estate and business relations	01 48 62 44 11
Environmental Management System	01 48 62 61 37
Surveys and construction/maintenance work	01 48 62 97 00
Customer accounts	01 48 62 90 72 / 01 48 62 91 93
Safety Management System	01 74 25 96 26
Territorial relations	01 74 29 44 61

→ Telephone helpline

01 48 62 16 56

→ E-mail

contact-lbg@adp fr

 [aeroportsdeparis.fr](mailto:aeroportsdeparis.fr)

The Management of Paris-Le Bourget  
Airport and General Aviation Aerodromes  
180, Esplanade de l'Air et de l'Espace  
Le Bourget Airport  
93350 LE BOURGET

  
**AÉROPORTS DE PARIS**